



*COMMERCIAL, LAND, INDUSTRIAL
REAL ESTATE SERVICE*

WHITWORTH LAND CORPORATION
126 South Milledge Avenue
Athens, GA 30605
Office 706-548-9300 Fax 706-548-7696

WWW.WHITWORTHLANDCORP.COM

SUMMARY ANALYSIS

POSTERO PROPERTY

Club Drive

± 84.2 ACRES

Athens-Clarke County, GA

LOCATION:	The property is located a short distance off Hwy 129 (Jefferson Rd). Turn right onto Kathwood Drive and left onto Club Drive. The property is on the left.
SIZE:	± 84.2 acres
TOPOGRAPHY:	Gently Rolling
FRONTAGE:	177 ft on Club Drive
ZONING:	RS-15 (Single-Family Residential)
UTILITIES:	Electrical – Georgia Power Water & Sewer – Clarke County Water Dept Gas – Natural Gas
PRICE:	\$842,000 – (\$10,000 per acre)
DESCRIPTION:	84 gently rolling land zoned RS-15 suitable for development with excellent in-town location. The property is serviced by all utilities and could become mixed use with a rezone approval.

Presented by:

L. Gerry Whitworth
WHITWORTH LAND CORPORATION
706-714-9300 Mobile
706-548-9300 Office
gwhit398@gmail.com

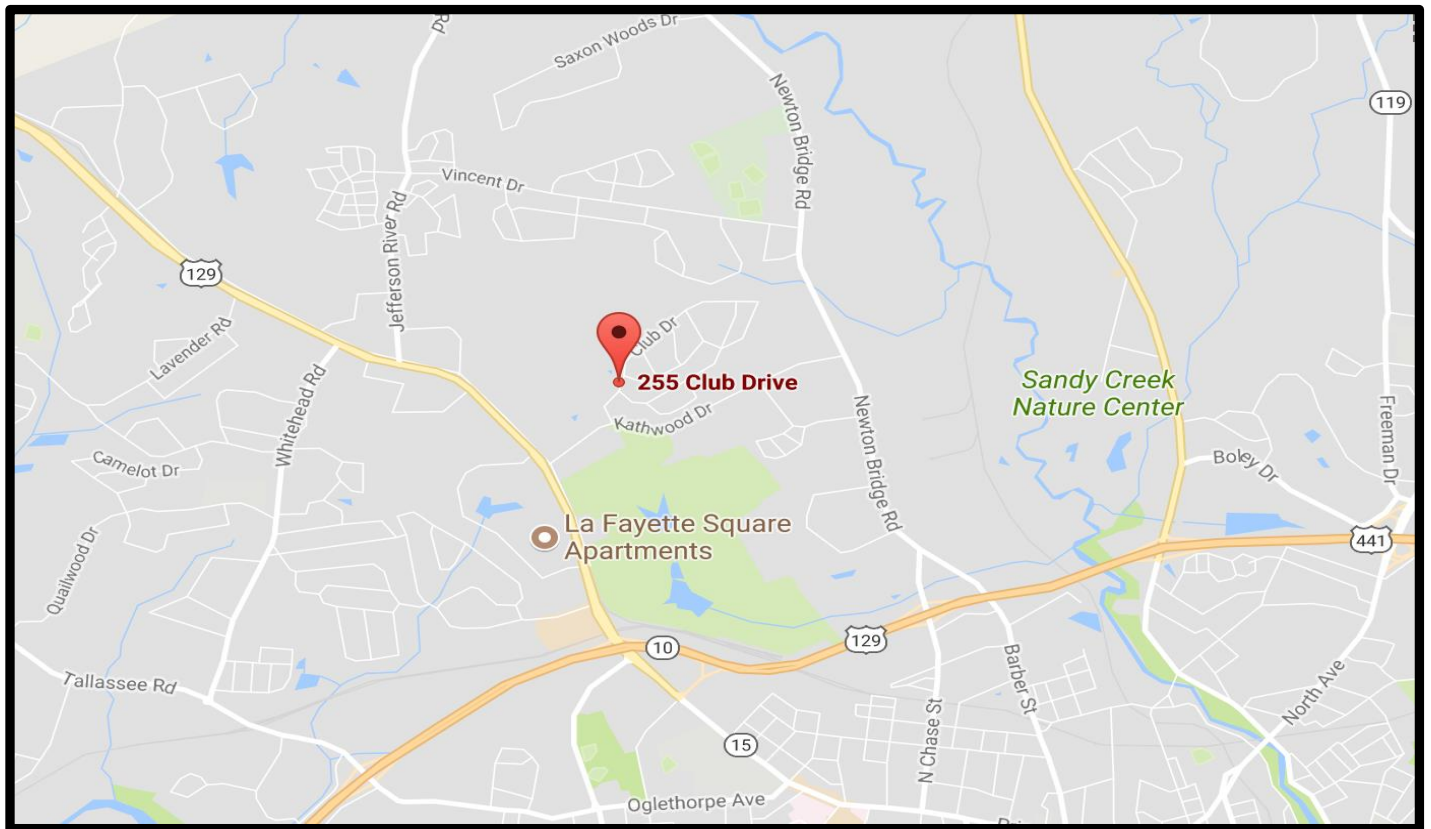
Presented by:

Grant Whitworth
WHITWORTH LAND CORPORATION
404-509-3543 Mobile
706-548-9300 Office
grantwhitworth@gmail.com

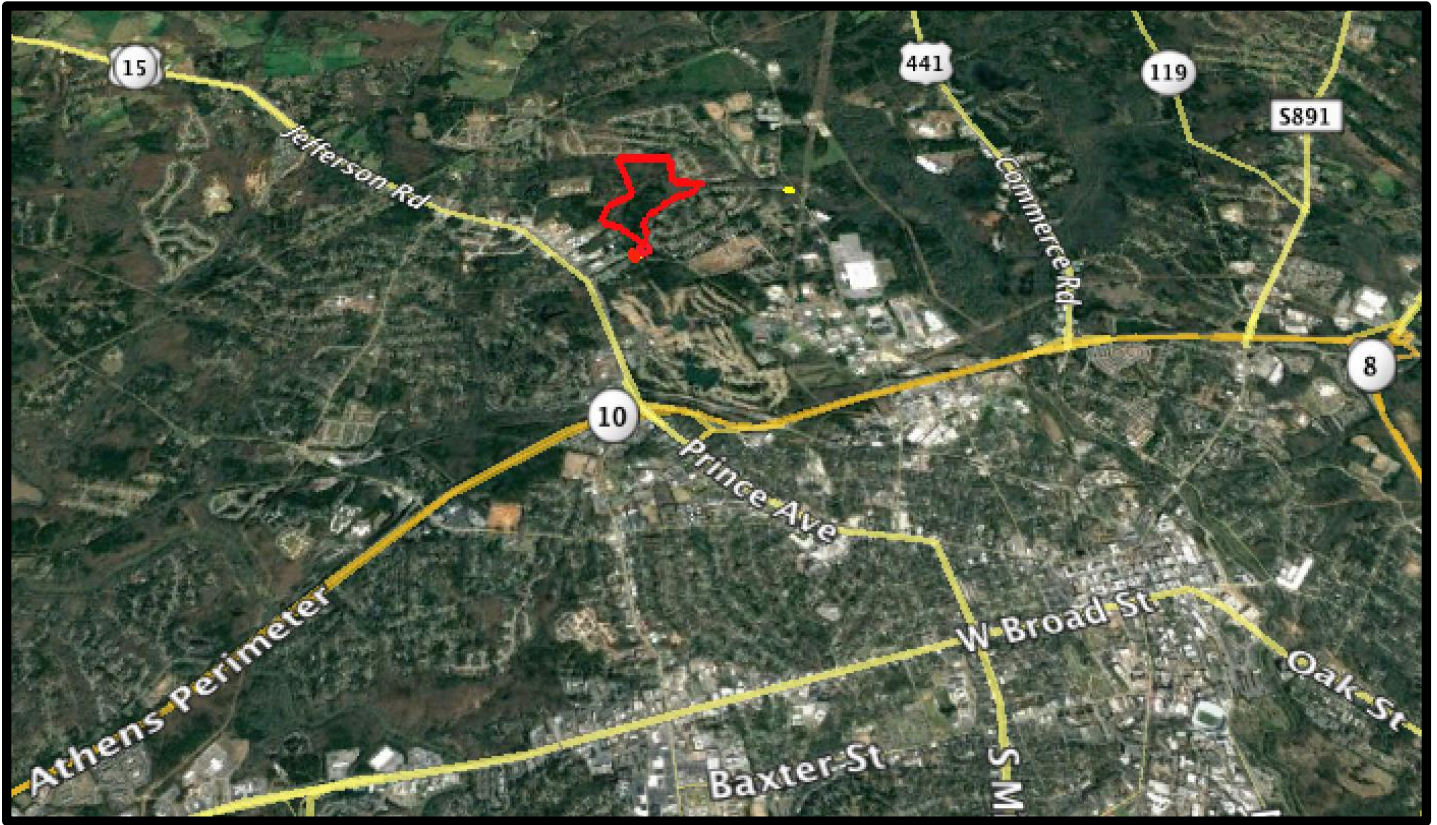
The information contained herein is derived from a variety of sources including the owner, public records and other sources Whitworth Land Corporation deems to be reliable. Whitworth Land Corporation has no reason to doubt, but does not guarantee the accuracy of this information.



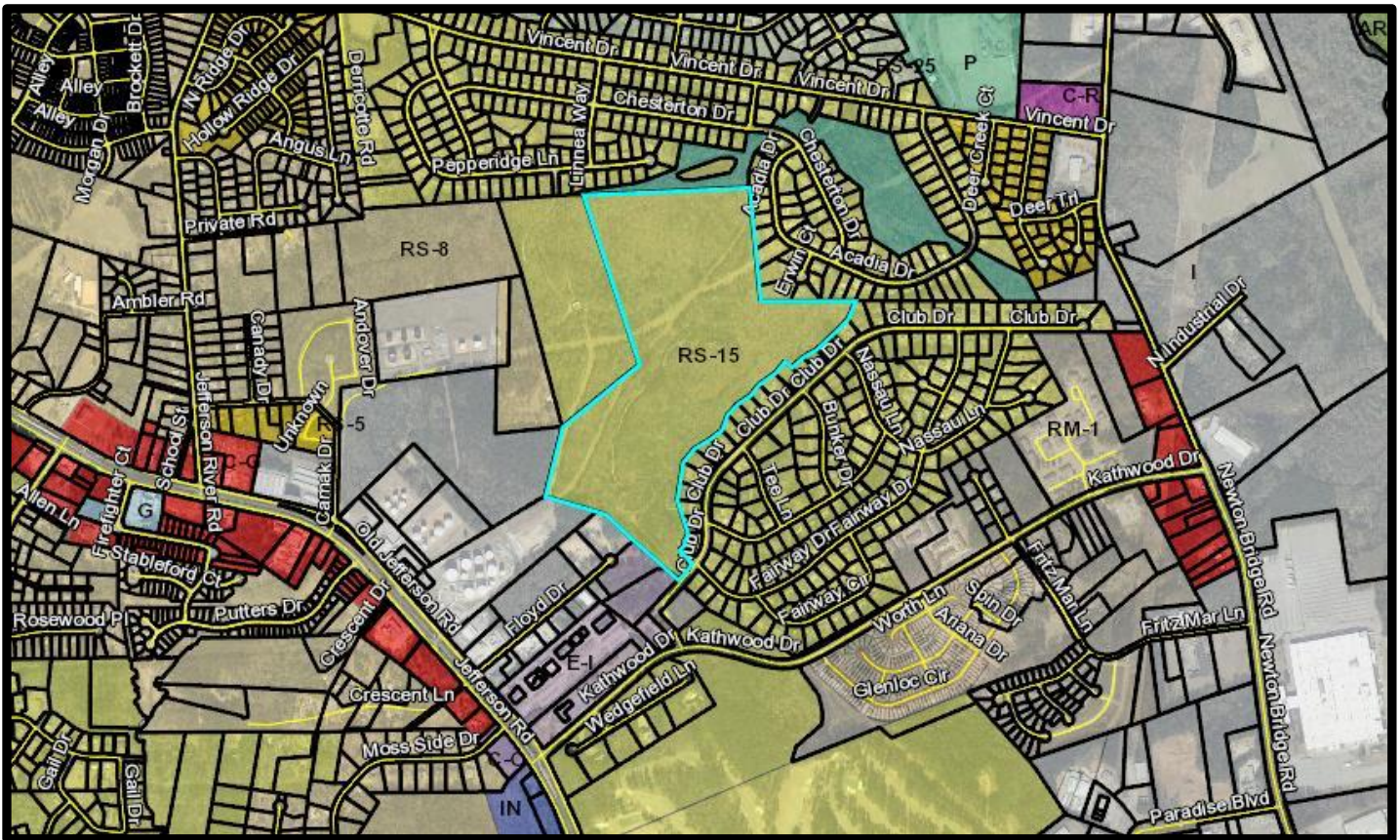
TAX ASSESSOR AERIAL



LOCATION MAP



GOOGLE MAP



ZONING MAP

